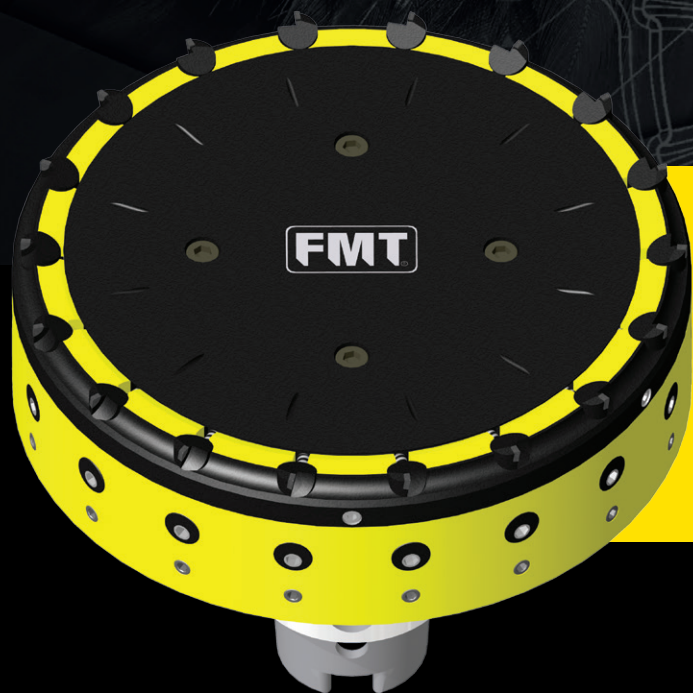
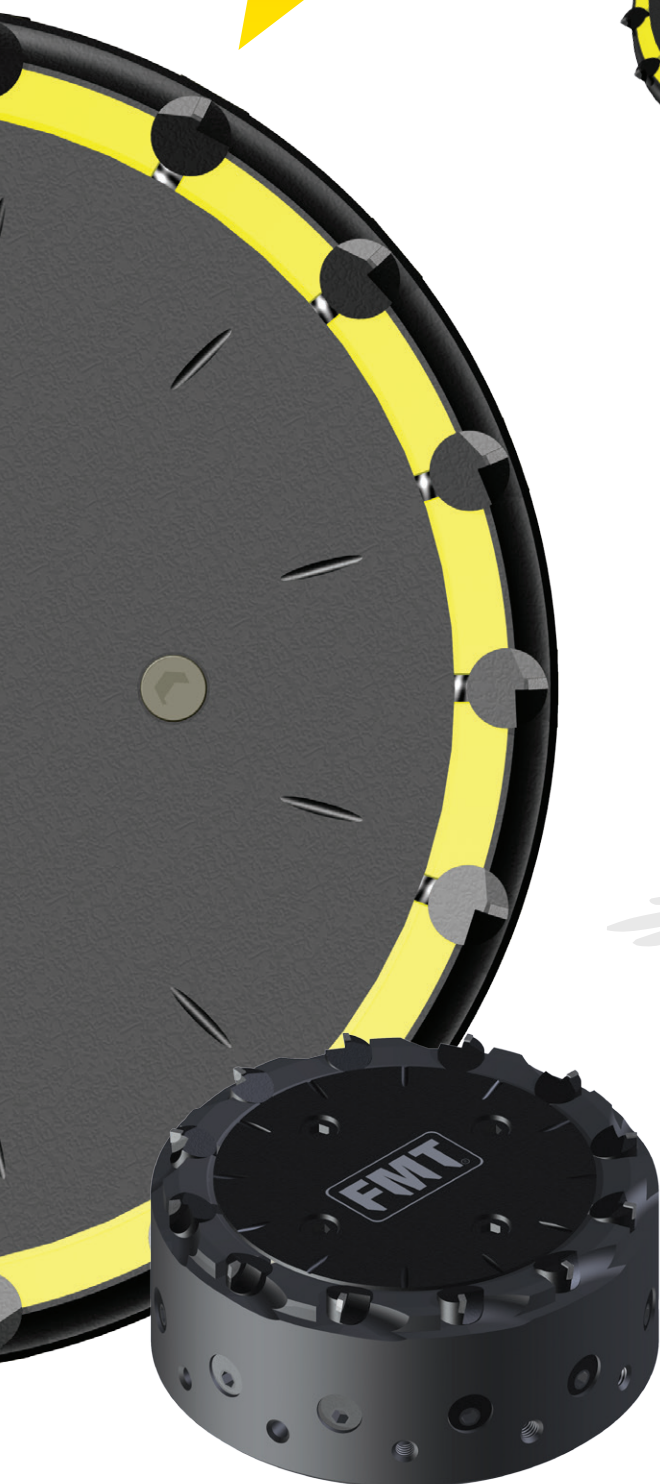
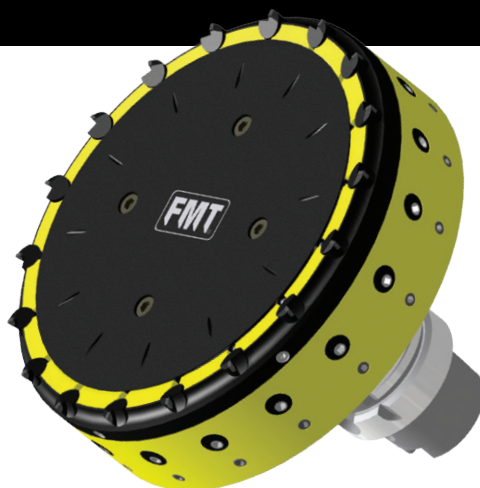


THUNDER



A face mill developed to machine a higher amount of overstock and reduce burr formation. Allowing the elimination of the roughing operation while maintaining high feeds and high speeds.

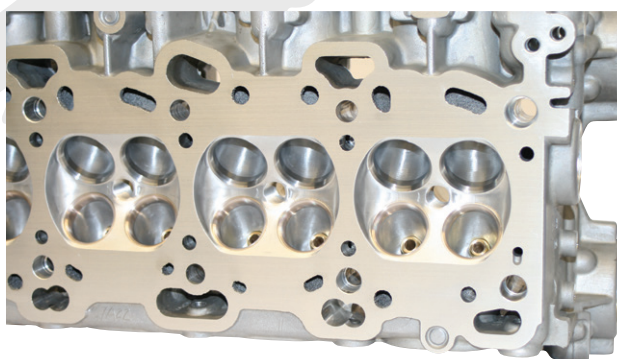
THUNDER



Using the Speed One system as a base design both safety and high speed capabilities are inherited from a success case. To achieve these operating capabilities the working length of each cutting edge was increased. This face mill should be **designed to each application** to get the most out of each machine capabilities.

Reduced set up time, no fine tuning required. Cartridges only need to be positioned and clamped. Cartridges allow for different set ups and overstock heights.

- One profile, one cut equals an outstanding surface quality.
- Reduced burr
- Feed limited by the machine
- Chip thickness control though cartridge adjustment (optional chip-breaker)
- Roughing and finishing in one pass.



Cartridge reference

9394.7000

PCD cartridge developed for the best performance and tool life when machining aluminium. Also applicable to non-ferrous metals.

Cutting speeds between 2000 to 8000 m/min depending on the machined material. Low silicon aluminium allows faster speeds while high silicone aluminium requires lower speeds and higher feeds. Maximum feed determined by number of cutting edges and design geometry.

Modern, flexible and elegant concept. Cost effective PCD cartridges. Allows for maximum RPM and feed rates.

BIG CHALLENGES, GREAT SOLUTIONS!